

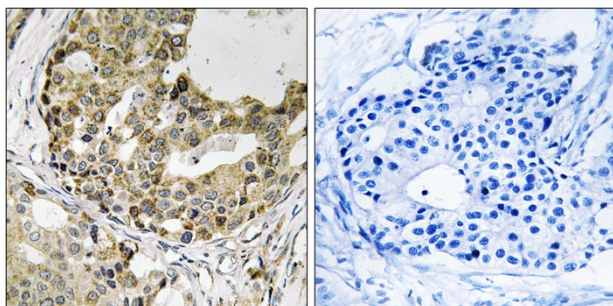


Neurexophilin-1 Polyclonal Antibody

Catalog No	YP-Ab-12752
Isotype	IgG
Reactivity	Human;Mouse;Rat
Applications	WB;IHC;IF;ELISA
Gene Name	NXPH1
Protein Name	Neurexophilin-1
Immunogen	The antiserum was produced against synthesized peptide derived from human NXPH1. AA range:77-126
Specificity	Neurexophilin-1 Polyclonal Antibody detects endogenous levels of Neurexophilin-1 protein.
Formulation	Liquid in PBS containing 50% glycerol, 0.5% BSA and 0.02% sodium azide.
Source	Polyclonal, Rabbit,IgG
Purification	The antibody was affinity-purified from rabbit antiserum by affinity-chromatography using epitope-specific immunogen.
Dilution	WB: 1/500 - 1/2000. IHC: 1/100 - 1/300. ELISA: 1/20000.. IF 1:50-200
Concentration	1 mg/ml
Purity	≥90%
Storage Stability	-20°C/1 year
Synonyms	NXPH1; NPH1; Nbla00697; Neurexophilin-1
Observed Band	31kD
Cell Pathway	Secreted .
Tissue Specificity	Brain,Neuroblastoma,
Function	function:May be signaling molecules that resemble neuropeptides and that act by binding to alpha-neurexins and possibly other receptors .,similarity:Belongs to the neurexophilin family.,
Background	This gene is a member of the neurexophilin family and encodes a secreted protein with a variable N-terminal domain, a highly conserved, N-glycosylated central domain, a short linker region, and a cysteine-rich C-terminal domain. This protein forms a very tight complex with alpha neurexins, a group of proteins that promote adhesion between dendrites and axons. [provided by RefSeq, Jul 2008],
matters needing attention	Avoid repeated freezing and thawing!

**Usage suggestions**

This product can be used in immunological reaction related experiments. For more information, please consult technical personnel.

Products Images

Immunohistochemistry analysis of paraffin-embedded human breast carcinoma tissue, using NXPH1 Antibody. The picture on the right is blocked with the synthesized peptide.



h

Western blot analysis of lysates from rat heart cells, using NXP1 Antibody. The lane on the right is blocked with the synthesized peptide.

NXP1--